

AUSMAR

DISPLAY HOME GUIDE | HARMONY



3 Soprano Street, Palmview QLD 4553 | 1800 AUSMAR | ausmar.au
AUSMAR Homes Pty Ltd trading as AUSMAR Homes QBCC 1083000



THE SEAFORTH

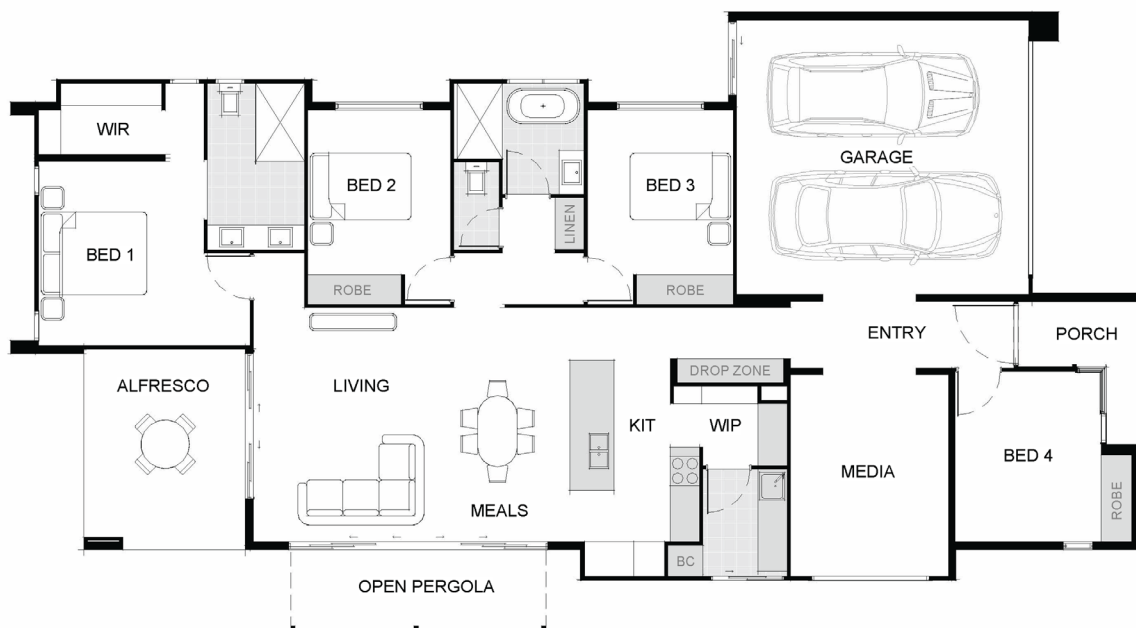
QUIET HIDEAWAY FOR YOU & YOUR FAMILY

4 | 2 | 2

MIN. LOT WIDTH 14m

WIDTH 12.22m
LENGTH 23.35m

GROUND FLOOR



FLOOR AREAS

Ground Floor	198.10m ²
Alfresco	13.73m ²
Porch	5.06m ²
Total	216.90m ²

LIVING AREAS

Living	4820 x 3700
Meals	4820 x 2800
Media	4140 x 3240
Alfresco	3870 x 3320
Garage	5630 x 6000

BEDROOMS

Bedroom 1	3780 x 3400
Bedroom 2	3380 x 2930
Bedroom 3	3380 x 3000
Bedroom 4	3510 x 3000

As you enter through the main entry of the Seaforth, the first wing of the home features a spacious media room and a guest bedroom or study option.

The private rear master suite is a tranquil retreat, complete with a walk-in robe and a luxurious master ensuite featuring a double vanity and a spacious shower.

The kitchen is perfect for weekend hosting, including a beautiful open plan living and dining with easy access to the backyard.

The main children's sleeping area is positioned in the centre of the home, ensuring separate zoning and peace of mind.

