

AUSMAR

CURVE ON COVE





27



CONTENTS

Summary	2
Introduction	4
Design vision and influences	8
Design details and features	16
Fixtures and finishes	33
Challenges, solutions and budget	35

SUMMARY

This case study explores the design and construction process of Curve on Cove, focusing on the homeowner's vision and the choices made to achieve it. Key points from the case study:

- **DESIRED AESTHETIC**

Mid-century modern with contemporary elements.
Natural textures and warm tones are prominent.

- **INSPIRATION**

Mood boards with various images and references to specific styles.

- **COLOURS**

Neutral hard finishes with pops of colour through furniture, artwork, and soft furnishings.

- **ROOM-BY-ROOM HIGHLIGHTS**

- Living/Dining/Kitchen

Open floor plan with a fireplace, expansive void, and seamless connection to the outdoors.

- Master Bedroom

Textured walls with soft furnishings and a sitting area with stunning views.

- Bathrooms

Consistent design with fluted glass, white tiles, and brass fixtures.

- Kids Bedroom

Shared children's room promotes play and togetherness.

- **SUSTAINABILITY**

Insulation, solar hot water system and panels, and strategically placed windows for natural light and ventilation.

- **MATERIAL SELECTION**

Balance of timeless appeal, functionality, and aesthetics. Easy-to-update elements for future changes.

- **COHESIVENESS**

Repeated colours, materials, and design elements throughout the house create a unified feel.

- **STATEMENT PIECES**

Stone walls, timber ceilings, large pendant lights, and the fireplace act as focal points.

- **PERSONAL TOUCH**

Record cabinet and other vintage elements reflect the homeowner's interests.

- **CHALLENGES OVERCOME**

Scissor lift requirement, material shortages due to COVID-19, and minor construction defects. Addressed through planning, communication, and creative solutions.

- **BUDGET CONSIDERATIONS**

Open communication ensured decisions aligned with financial goals. Prioritised main living areas.

- **LIVING AT CURVE ON COVE**

Functional spaces, large alfresco area, and overall aesthetic meet and exceed expectations. Minor adjustment considered for the ensuite bathroom layout. Overall, immense satisfaction with the final product.

Curve on Cove offers valuable insights for anyone considering building a custom home, showcasing the importance of planning, communication, and thoughtful design choices.



CURVE ON COVE

INTRODUCTION

The salty air and vibrant community of Maroochydore on the Sunshine Coast had always held a special place in the heart of a local, family of four. As industry professionals with a passion for design, the chance to build a custom home wasn't just about practicality - it was about creating a space that perfectly reflected their lifestyle and dreams.

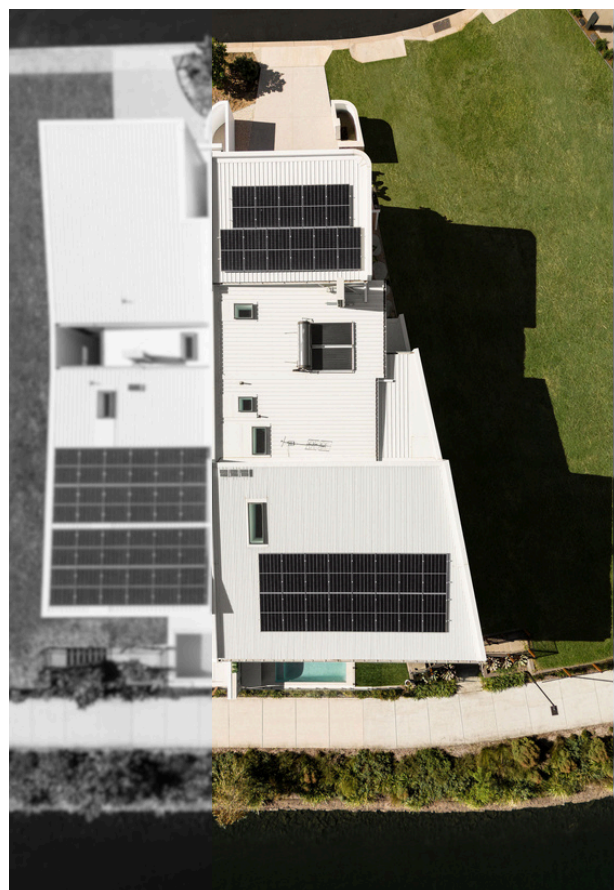
Their priority was a home that could keep pace with their busy lives. While acreage held some appeal, it ultimately didn't align with their current needs. They craved the convenience of being close to the beach, schools, and the heart of the Sunshine Coast. Maroochydore ticked all the boxes - proximity to work, a vibrant community, and the draw of the waterfront lifestyle.

The decision to build custom stemmed from a unique block they had secured - a "pizza-shaped" challenge. Standard floor plans wouldn't work on the land's configuration, leading them straight to a custom home journey. Their vision demanded a space that could accommodate family visitors, as well as their own needs. Additionally, they desired a brand-new home, free from the limitations of renovations and existing structures. A custom build offered a blank canvas, a chance to create a home that was truly 100% "them."

Every element, from the layout to the finishes, would be tailored to their specific needs and desires, not the needs of a previous owner.

Imagine - a brand new home, low maintenance and ready to create a lifetime of memories. That's the dream this family is building on the Sunshine Coast.

Pizza-shaped block →



LOCATED IN THE HEART OF MAROOCHYDORE



A CUSTOM BUILD
OFFERED A BLANK
CANVAS



“ “

**THE AESTHETIC I ENVISIONED FOR
MY HOME IS A BLEND OF
MID-CENTURY MODERN WITH
SOME CONTEMPORARY ELEMENTS.**

DESIGN VISION AND INFLUENCES

What initially sparked your desire to build a custom home?

Building a custom home allowed us to create a living space that is not only functional but also reflects our personal style, values, and aspirations. It is uniquely ours, a labour of love and a huge amount of satisfaction comes from enjoying the space we created. From the layout and architectural details, to the overall ambiance and feel of the space. Building a custom home and planning every space avoids the compromises associated with pre-existing homes.

Location played a significant role in our decision as well. A home that complements our daily life, the ability to walk to local restaurants, has a view of the water and offers minimal maintenance.

How would you describe your dream home's overall aesthetic?

The aesthetic I envisioned for my home is a blend of mid-century modern with some contemporary elements. I was particularly drawn to the warm textures and organic shapes of mid-century design, accented by touches of brushed brass statement wall sconces and pendant lights.

One of the non-negotiable design elements for us was incorporating real timber in the ceiling and fluted wall panelling in key areas like the void, alfresco ceilings, pantry and master bed walls. These features added a natural, rustic charm, but also creates a connection to the outdoors, and enhances the overall ambiance of the home.

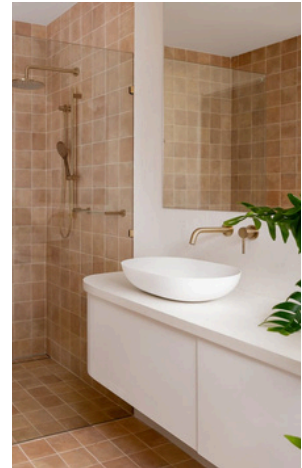
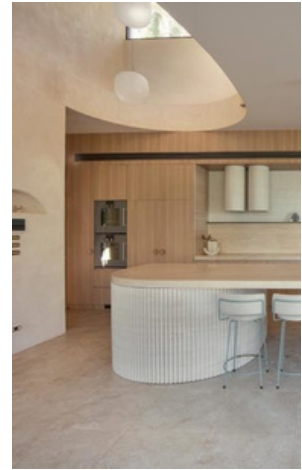
Real timber finishes →



We love how the 7 metre stone fireplace added texture to the room, while also drawing the eye up to the mid-century inspired ceiling. Our dream home blends timeless design with modern touches for a comfortable, inviting space. These elements not only created a visually appealing room, but it also contributed to a comfortable and inviting atmosphere that we look forward to enjoying for years to come.



Inspiration photos →



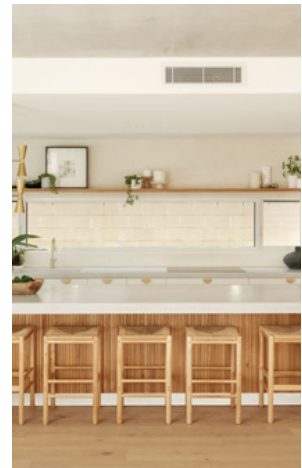
Did you create any mood boards or collect inspiration photos? If so, what aspects of these images resonated with you?

I had lots of mood boards, initially just a broad range of images, that caught my eye or inspired a feeling. They helped in identifying a theme and styles that appealed to me.

Then I progressed onto internal and external mood boards focusing on the build elements and hard finishes. These aspects formed the foundation of the space, ensuring they aligned with my overall design vision. Here I was able to produce specific elements or themes that consistently appeared throughout the home.

Lastly, I created room-specific mood boards. Creating separate mood boards for furniture, artwork, and soft furnishings for each room I was planning, this helped to visualise how all elements and colours would come together cohesively within specific spaces.

Creating mood boards and collecting inspiration photos was incredibly helpful in defining and refining my vision for a space.



Did you find yourself drawn to specific colours or combinations that set the tone for each room?

My colour palette was intentionally fairly neutral for the hard finishes, natural stone, warmer timber colours, sandy coloured tiles and white. Then I introduced a rich array of colour in the furniture, bedding, artwork and soft furnishings. Throughout the home, you'll find a consistent theme of warm autumn tones such as soft pinks, burnt oranges, sage greens, and aubergine, which add depth and character to the spaces.





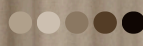
↙ *Burnt orange tones*
● ● ●



↙ *Sage green*
● ● ●



↙ Warm autumn tones





“ “

**UNIQUE ARCHITECTURAL DETAILS
LIKE THE CURVED FACADE ADD
CHARACTER TO OUR HOME,
MAKING IT STAND OUT IN OUR
NEIGHBOURHOOD.**

DESIGN DETAILS AND FEATURES

Expansive void



Can you describe the design choices you made for each room, considering how the space functions and looks?

In our living, dining, and kitchen area, we focused on creating a spacious and inviting atmosphere.

The highlight is the expansive void over the living space, complemented by a striking stone fireplace and a beautiful timber ceiling.

We love how the stacker sliders seamlessly connect the indoor space with the alfresco area, using the same tile both inside and out to create one expansive living area that merges with the outdoors.

The 7 metre high ceilings that follow to the alfresco not only enhances the feeling of openness but also maximises our view of the sky and the nearby water, which is simply breathtaking.

The three large pendant lights hanging in the void and the soft glow of wall sconces add a warm and inviting ambiance, perfect for relaxing evenings with family and friends.

Another feature not to be forgotten are the motorised curtains. The fabric selectively chosen to add another layer of warmth but also a practical colour limiting the ability to see any marks over time.

7 metre high, motorised curtains



We chose a timeless all-white kitchen for a clean canvas. Fluted wall panels on the island and pantry add character, texture, and echo the home's curved elements. A mid-century brass pendant above the island bench completes the look, bringing elegance to the cooking and dining space.

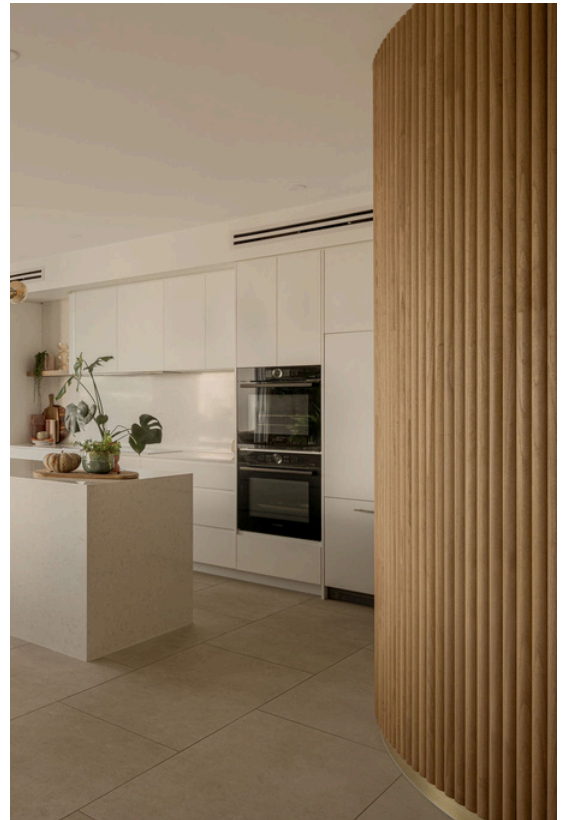


Fluted wall panels





↖ mid-century brass pendant



↗ Curved wall to hidden powder room





Hidden bar ↗



↖ Curved vanity

One of my favourite rooms is the powder room, accessed through a secret door. Although a full bathroom, we wanted it to exude a moody and luxurious feel of a powder room. We achieved this with a shower hidden behind fluted glass, a curved vanity, and stunning feature tiling that adds texture and depth. The soft pink tones of the vanity bowl bring in a touch of colour, complemented by brass fixtures and a statement wall sconce that completes the intimate atmosphere.

Throughout the bathrooms, we maintained a consistent design with fluted glass and white finger tiles that add vertical lines and texture. Matte baths and vanity bowls, paired with brushed brass fixtures and elegant wall sconces, enhance the luxurious feel.





Fluted glass →



Matte finish ↗

What initially sparked your desire to build a custom home?

Building a custom home allowed us to create a living space that is not only functional but also reflects our personal style, values, and aspirations. It is uniquely ours, a labour of love and a huge amount of satisfaction comes from enjoying the space we created. From the layout and architectural details to the overall ambience and feel of the space. Building a custom home and planning every space avoids the compromises associated with pre-existing homes.

Location played a significant role in our decision as well. A home that complements our daily life, the ability to walk to local restaurants, has a view of the water and offers minimal maintenance.

How would you describe your dream home's overall aesthetic?

The aesthetic I envisioned for my home is a blend of mid-century modern with some contemporary elements. I was particularly drawn to the warm textures and organic shapes of mid-century design, accented by touches of brushed brass statement wall sconces and pendant lights.

One of the non-negotiable design elements for us was incorporating real timber in the ceiling and fluted wall panelling in key areas like the void and alfresco ceilings, pantry and master bed walls. These features added a natural, rustic charm but also creates a connection to the outdoors and enhances the overall ambience of the home.

Real timber finishes →



Another distinctive design choice we made for our family was to enable our children to share a spacious bedroom. Instead of constructing the usual dividing wall between their rooms, we opted to leave it out. This decision has created a delightful space where they can share and play together freely.



← *Dividing wall can be added later*



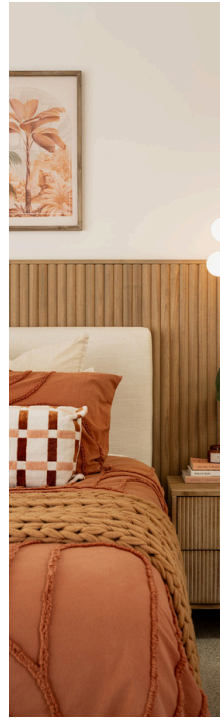


↙ Study nook



In our master bedroom, we opted for a textured backdrop using the timber fluted wall panelling that extends halfway up the walls adding warmth to the room. Complementing this textured backdrop, carefully chosen linen and artwork are integrated to enhance and harmonise with the overall colour theme of the space.

The upper sitting area overlooks the void, and offers stunning views of the canal. Here, the artwork and sage green boucle daybed coupled with the warmth of the timber vinyl floors makes this one of my favourite spaces.





Did you incorporate any sustainable design elements or materials into your home?

In designing our home, sustainability was a core principle for us. We made several deliberate choices to ensure our home is energy-efficient and environmentally friendly.

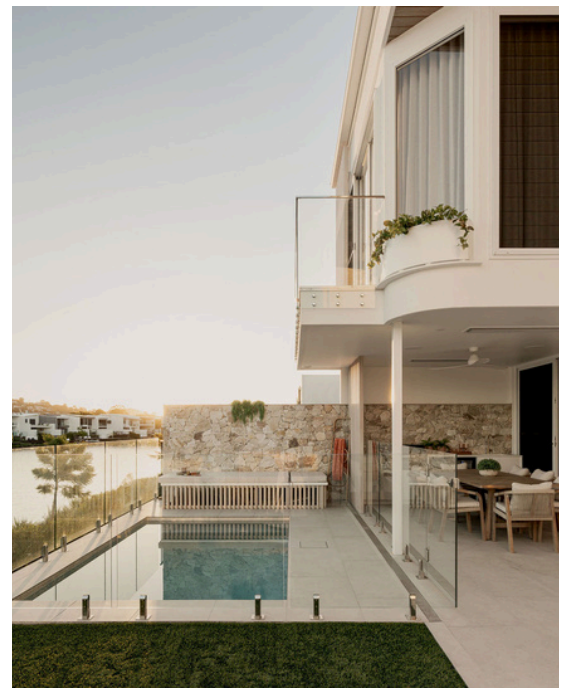
One of the first things we did was to enhance insulation throughout the house. This not only keeps us comfortable year-round but also significantly reduces our heating and cooling costs.

Secondly, we used highlight windows and louvres to both capture;

Summer breezes and northern light

We're also proud to have installed a solar hot water system and solar panels. It's incredibly rewarding to know that much of our energy comes from the sun, making our home more self-sufficient and reducing our carbon footprint.

Lastly, the decision to use curtains strategically was also important; they help us retain warmth in winter.



“

**ACHIEVING A COHESIVE AND
UNIFIED AESTHETIC THROUGHOUT
MY HOME WAS A PRIORITY FOR ME.**





FIXTURES AND FINISHES

How did you approach selecting materials? Did you prioritise durability, aesthetics, or a balance of both?

Kitchen

When choosing hard finishes, my approach focused on balancing timeless appeal, functionality, and aesthetics across all aspects. For instance, in the kitchen, I opted for a classic white colour scheme paired with a functional layout. The aesthetic aspect was enhanced by selecting pendant lights and other accessories that can be easily updated or changed in the future without major expense.

Bathroom

Similarly, in the bathroom, I prioritised timeless design with tiled feature walls in white, ensuring longevity and versatility. Functionality was key in the layout and choice of fixtures, while aesthetics were addressed through carefully selected wall sconces and accessories, adding a touch of style to the space. This approach allowed me to create spaces that not only look appealing now but also serve practical needs and can adapt to future preferences with minimal effort.

Stone Benchtops

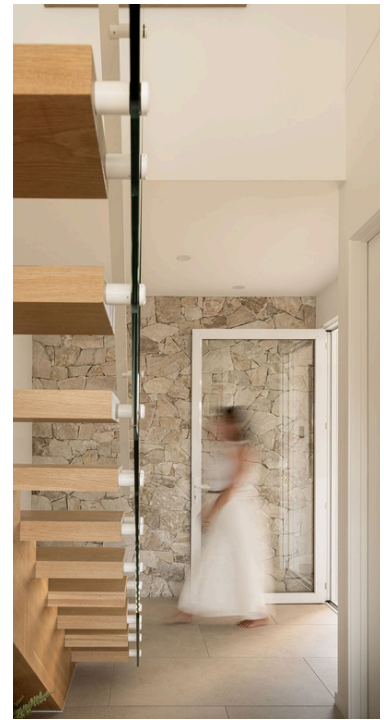
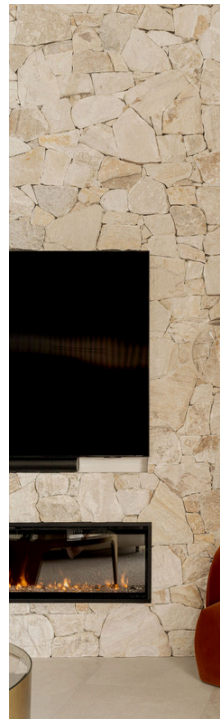
I chose stone benchtops for their durability and selected a pattern that offers both texture and practicality. The consistent pattern in the stone helps to camouflage any potential mess in a bustling household with kids, making it a functional and stylish choice for our kitchen.

Durable stone benchtops →



How did you ensure that the various finishes throughout your home flowed seamlessly together and created a unified aesthetic?

For a cohesive look, I replicated colours and products throughout my home. Consistent flooring, cabinetry finishes, and paint colours (like the same flooring material in different rooms) ensured each space complemented the others. Similarly, hardware finishes like brushed brass reinforced the mid-century theme. Repeating design elements, like lighting fixtures, further tied everything together. This focus on consistency created a seamless flow, harmony, and a well-thought-out space.



CHALLENGES, SOLUTIONS, AND BUDGET

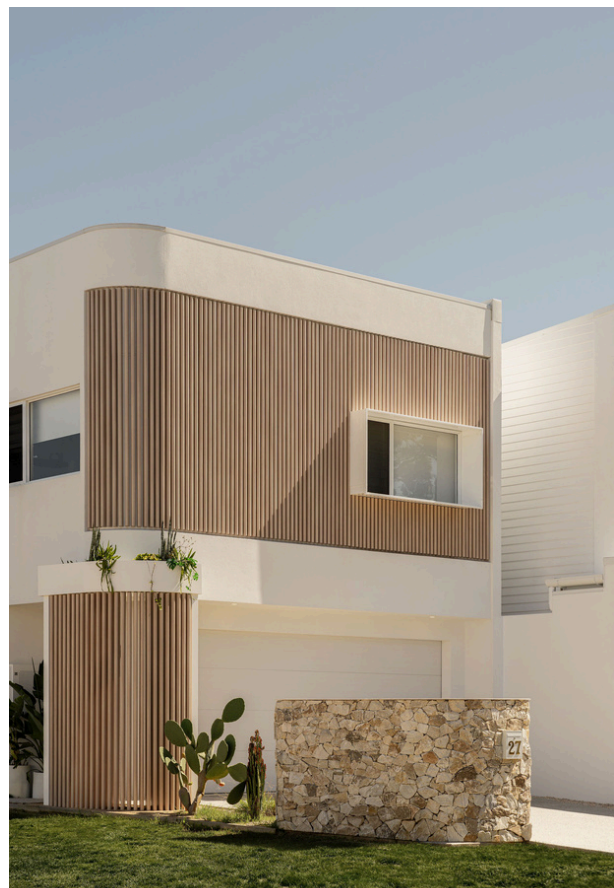
Did you encounter any challenges during the design or construction process? How did you overcome them?

Building our dream home wasn't without hurdles. First, the massive stone fireplace wall required a scissor lift, delaying tiling until it was complete. Careful planning ensured this didn't derail the project. Like many COVID projects, material and trade shortages demanded flexibility. Proactive communication with suppliers and trades kept things moving. Even minor hiccups, common in custom builds, were tackled with creative solutions from our skilled team. Throughout, teamwork, adaptability, and problem-solving were key. By staying flexible and proactive, we overcame challenges and brought our vision of a beautiful, functional home to life.

How did you approach budgeting for the design elements, fixtures, and finishes? Did you prioritise certain areas over others?

Approaching budgeting for the design elements, fixtures, and finishes of our home involved early and open conversations to ensure we stayed within our financial means. By discussing budget constraints early in the design phase, we were able to make informed decisions that aligned with our financial goals while still achieving our desired aesthetic and functionality.

We prioritised our main living areas, such as the living room, kitchen, and dining area, allocating a larger portion of our budget to these spaces. These areas are where we spend the most time and entertain guests, so it was important to us that they reflected our style and provided the comfort and functionality we desired.









Our custom home has exceeded our expectations.

The functional spaces we designed, such as the mudroom and laundry, have proven to be incredibly practical and efficient in our daily routines.

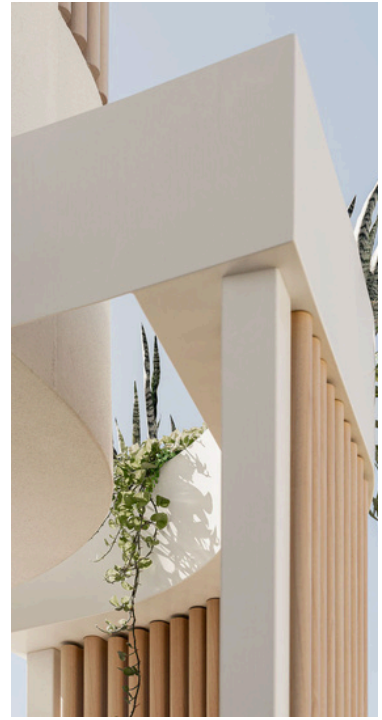
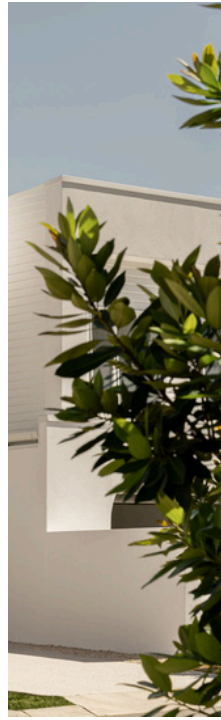
↙ *Clutter free living*



Our large alfresco area has been a highlight, providing ample space for entertaining guests and enjoying outdoor activities. It has become a favourite spot for gatherings and relaxation, enhancing our overall lifestyle.

Overall, I am deeply satisfied with our AUSMAR home and wouldn't change any of the colours, selections, fixtures, or fittings we chose during the design process. These choices have contributed to creating a cohesive and aesthetically pleasing environment that aligns perfectly with our vision.

If I were to consider any changes, it would be to adjust the layout of the ensuite bathroom. However, this is a minor consideration in the grand scheme of our overall satisfaction with the home.



“ “

**WE'RE INCREDIBLY GRATEFUL TO
LIVE IN A SPACE WE DESIGNED,
ONE WE LOOK FORWARD TO
ENJOYING FOR YEARS TO COME.**

*Seamless connection between
indoor and outdoor living*





AUSMAR